



DSL Terminator 100

The DSL Terminator 100 is a high-performance Layer-3 device that terminates PVC or PPP sessions originating from a DSL CPE unit and transported via a DSLAM (DSL Access Multiplexor). It gives service providers and carriers a cost-effective method of aggregating and terminating high numbers of virtual circuits. The DSL Terminator 100 also features integrated Layer-3 capabilities and subscriber management features that enable service providers to perform routing, authentication, billing and service selection capabilities. The DSL Terminator 100 is primarily targeted at service providers for cost-effective circuit termination and service management but can also be used by carriers and transport providers for circuit termination and wholesaling services. No competing product offers so much speed, density and versatility at such an affordable price.

Advanced hardware architecture delivers high throughput and high density

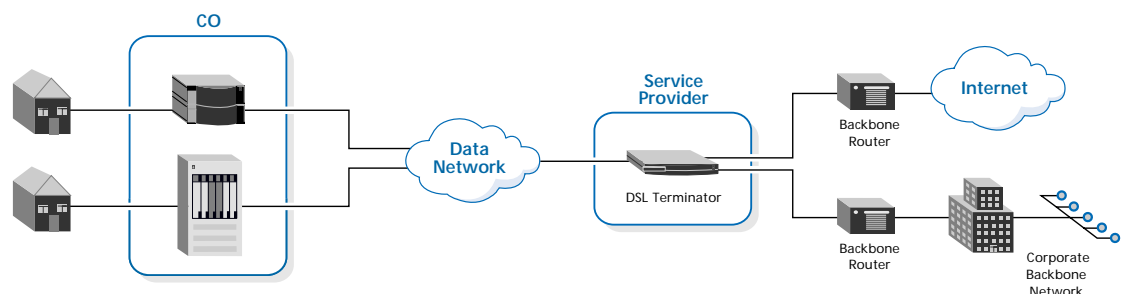
RISC-based hardware architecture furnishes the high throughput and session density necessary for delivering DSL services to an ever-expanding customer base.

- High-speed 260 MIPS, 200 MHz R5000 RISC CPU
- Up to 1,000 simultaneous PPP or PVC
- Throughput from 15,000-20,000 packets per second
- Efficient, compact design is flexible, expandable and reliable



Occupying only 1U of standard Telco rack space and lightweight enough for desktop use, the DSL Terminator 100 packs a lot of capability into a very small footprint. The unit is very easy to expand and customize, enabling it to grow with your network. A robust design featuring optional power supply redundancy ensures high service uptime and greater customer satisfaction.

- ITwo PCMCIA/PC flash memory expansion slots
- One DRAM expansion slot
- Dual 10/100 Mbps Ethernet ports
- Simple Software upgrade procedures
- Optional dual power supply, including a DC version
- Safety tested



DSL Terminator 100

TAOS and NavisAccess provide easy operation, network-wide compatibility and comprehensive management

An extended version of the Lucent True Access Operating System (TAOS) deployed in over 60,000 MAX access concentrators makes the DSL Terminator 100 highly compatible, easy to use, and feature-rich. Because it works with the Lucent NavisAccess solution, the DSL Terminator 100 is easy to manage too.

- Extended TAOS includes features developed specifically for DSL circuit termination and Layer-3 services management
- PPP over ATM and PPP over Ethernet termination support
- RFC 1483 and RFC 1490 based PVC terminations
- Bridged IP Routing
- Compatible with DSL PPP service provided support from any DSL CPE router and DSLAM concentrator (PPP over ATM, PPP over Ethernet)
- Virtual routing for high-density circuit termination with increased security, flexibility and scalability
- PAP/CHAP and RADIUS authentication
- Comprehensive SNMP management
- L2TP, PPT and ATMP tunneling support
- NavisAccess visual network management tools with support for NT and UNIX platforms

Hardware Specifications

Dimensions

1.75 in (1U) x 17 in x 12 in
[4.5 cm x 43.2 cm x 30.5 cm]

Weight

10 lbs [4.6 kg]

LAN Interfaces

Dual Ethernet 10Base-T and 100Base-T

Physical Interfaces

DS3 and OC-3c/STM-1, DS1, T1/E1, R5-232

Base Unit Slots

Single SDRAM card slot, Dual PCMCIA card slots, dual expansion slots

Expansion Slot Options

DS3 Frame, DS3 ATM, 8-port T1/E1 (Unchannelized), OC-3c/STM-1

Power Supply

Redundant AC and DC versions available

Power Requirements

80 Watts, 47-63 Hz, 90-240 VAC, 270 BTU/hour

Processor Performance

15,000 to 20,000 PPS

Operating Requirements

Temperature: 32-104°F [0-40°C]

Altitude: 0-14,600 feet
[0-4,400 meters]

Relative Humidity: 5-90%
(non-condensing)

Safety Certifications

Full NEBS compliant

EMI/RF

FCC Part 68, FCC Part 15, E55022, EN500827

Software Specifications

PPP Termination

PPP over ATM, PPP over Ethernet

PVC Termination

RFC 1483 (MPOA), RFC 1490 (MPOFR)

IP Routing Protocols

RIP, RIP2, OSPF, Bridged IP Routing

Tunneling Protocols

L2TP, PPTP, ATMP

Security

RADIUS, Extended RADIUS, Password Authentication Protocol (PAP), Challenge Authentication Protocol (CHAP), profile based access

Services Selection Support

Dynamic service selection and provider selection

Virtual Routing Support

Secure logical partitioning/Multiple route tables

Plug-and-play Support

Plug-and-play capability based on DHCP/TFTP Management SNMP, NavisAccess

Operating System

True Access Operation System (TAOS)

To learn more, contact your Lucent Technologies Representative, Authorized Reseller, or Sales Agent. Or, visit our Web sites. www.lucent.com

