



SuperStack II NETBuilder Remote Office Router Family

Flexible network expansion, including ISDN

3Com's SuperStack II NETBuilder products provide five easy-to-use platforms. The SuperStack II NETBuilder 22x (Ethernet), SuperStack II NETBuilder 32x (Token Ring), and SuperStack II NETBuilder 42x (Ethernet/ISDN) and SuperStack II NETBuilder 52x (Token Ring/ISDN) series support full-featured routing, bridging, and 3Com's Boundary Routing® system architecture. The SuperStack II 20x (Ethernet) platforms support bridging and Boundary Routing system architecture.



3Com's suite of SuperStack II NETBuilder® solutions provides an unmatched combination of robust features and superior ease-of-use. Loaded with features and competitively priced, these solutions deliver full value and functionality.

Whether your network requires links to small, midsize, or large branch offices, 3Com has the right choices—including Ethernet, Token Ring, and ISDN interfaces, Boundary Routing cost savings, and SuperStack™ II capabilities.

Key Benefits:



Cost-Effective Network Expansion

- From pure bridging to advanced routing, 3Com has the platform to extend your network's reach
- SuperStack II NETBuilder products simplify growth with affordable upgrade choices
- For economical network control, SuperStack II NETBuilder platforms provide LAN multiprotocol support and connections to WAN services, advanced dial features, bandwidth management, and network management services
- SuperStack II NETBuilder ISDN support offers increased WAN performance and flexibility

Innovative Boundary Routing Advantages

- 3Com's Boundary Routing system architecture sets the standard for routing simplicity and economy in remote offices
- With the Boundary Routing system, remote router installation is truly plug-and-play
- Boundary Routing features are optimized for SNA connections in four types of SuperStack II NETBuilder routers

SuperStack II Advantages

- 3Com SuperStack II systems are able to integrate router operations for WAN connections with hubs and switches for local networking
- SuperStack II configurations provide an added level of flexibility and fault tolerance





Complete Options for Remote Office Networks

No matter what kind of remote office environment you have, 3Com has the answer for cost-effective network expansion.

Choose from our full range of products to match the size of your network, the number of connections, and the upgrade capacity you require. Every product in 3Com's expanding line provides excellent value.

Transcend Networking Strategy

The range of remote solutions is part of 3Com's Transcend® Networking, a blueprint for growth, encompassing all network areas. Based on industry standards and spanned by Transcend management applications, Transcend Networking offers cost-effective solutions to scale the performance and extend the reach of your LAN and WAN connections.

Plug-and-Play Network Expansion with 3Com's Boundary Routing System

3Com's exclusive Boundary Routing system architecture simplifies network expansion. When employees at a branch

office need online access to central data, the system can provide it cost-effectively. 3Com's Boundary Routing system lets you add remote sites to your network without adding complexity or administrative resources.

The system works in remote branch offices having one LAN segment and one active WAN connection to a central location. Using the WAN connection, Boundary Routing facilities let a central-site router handle many routing tasks for the remote device. Router installation at the remote site becomes a 1-2-3 operation. Remote software updates and configuration changes take place over the WAN, with no need for local expertise. Centralizing these tasks minimizes the administrative costs of network maintenance—the main expense of remote internetworking.

What's more, one central router can provide updates and changes for many remote sites, further increasing the efficiency of central-site administrators. The system provides full routing functionality at remote locations, including support for IP, Novell® IPX, AppleTalk® Phase II, DECnet® Phase IV and Phase V, OSI, XNS,™ Banyan® VINES,® SDLC, and DLSw. Boundary Routing for SNA provides SDLC conversion and automatically prioritizes SNA protocols to ensure reliable performance.

Today, central-site Boundary Routing software runs on any NETBuilder II® bridge/router or any other SuperStack II

NETBuilder 227, 327, 427, or 527 router.

Remote Boundary Routing software operates on these platforms:

- SuperStack II NETBuilder 201 non-upgradeable Ethernet router
- SuperStack II NETBuilder 221 or 223 (for SNA) Ethernet router
- SuperStack II NETBuilder 421 or 423 (for SNA) Ethernet/ISDN router
- SuperStack II NETBuilder 323 (for SNA) Token Ring router
- SuperStack II NETBuilder 523 (for SNA) Token Ring/ISDN router

With its cost-saving and time-reducing benefits, Boundary Routing is the ideal choice for maximizing the network management resources of expanding organizations.

DC Power Option for SuperStack II

The SuperStack II DC Voltage Converter (available in 3 Output and 6 Output versions) offers the ability to power the SuperStack II NETBuilder line using a -48 V DC power source. Customers now have the option to back up an AC source with a DC power supply. In addition, SuperStack II DC gives customers the flexibility to connect remote sites where DC power is required.

Fast, Flexible, Reliable ISDN for Remote Branch Offices

SuperStack II NETBuilder 42x and 52x series routers support ISDN to bring end-to-end digital dial services to remote LANs.

ISDN delivers the fast call setup needed to support routing protocols and the transmission speed to easily surpass analog modems. SuperStack II NETBuilder 42x and 52x series routers support two ISDN 64 Kbps data channels and one 16 Kbps control channel via the ISDN Basic Rate Interface (BRI). The two data chan-

nels can be used independently to connect different locations or as a single logical connection to a remote site.





ISDN end-to-end digital transmission is more accurate and reliable than analog transmission. All-digital transmission is more flexible, too. It offers a range of applications such as integrated voice and data and resource sharing, and it's ideal for teleworking.

Adding to ISDN flexibility, SuperStack II NETBuilder 42x and 52x series routers offer a choice of Boundary

Routing, access routing, or full multiprotocol routing. You also have the option of the ISDN Primary Rate Interface (PRI), providing multiple data channels, with the NETBuilder II bridge/router plus a NETBuilder II WAN Extender 2T1 or 2E1 at the central site. For more about ISDN technology, please see the *ISDN and Data Networking* 3Com technical paper (stock no. 500606-00x).

Together, 3Com product advantages and ISDN benefits are unbeatable.

SuperStack II NETBuilder Platforms

| | Platforms | | | | |
|---|--|--|---|--|--|
| | Ethernet | Ethernet | Ethernet/ISDN | Token Ring | Token Ring/ISDN |
| Applications |  <p>SuperStack II NETBuilder 20x Series</p> |  <p>SuperStack II NETBuilder 22x Series</p> |  <p>SuperStack II NETBuilder 42x Series</p> |  <p>SuperStack II NETBuilder 32x Series</p> |  <p>SuperStack II NETBuilder 52x Series</p> |
| Bridging | | | | | |
| Small number of peer remote sites, 1 LAN x 3 WANs, bridging only | SuperStack II NETBuilder 200 bridge | | | | |
| Boundary Routing | | | | | |
| Small to midsize branch offices, 1 LAN x 1 WAN + 1 backup link to a central or regional office | SuperStack II NETBuilder 201 router for Boundary Routing | SuperStack II NETBuilder 221 router for Boundary Routing | SuperStack II NETBuilder 421 router for Boundary Routing via ISDN | | |
| SNA Boundary Routing | | | | | |
| Small to midsize branch offices, 1 LAN x 1 WAN + 1 backup link and support of DLSw, SNA, NetBIOS, and SDLC conversion | | SuperStack II NETBuilder 223 router for Boundary Routing optimized for SNA | SuperStack II NETBuilder 423 router for Boundary Routing via ISDN, optimized for SNA | SuperStack II NETBuilder 323 router for Boundary Routing optimized for SNA | SuperStack II NETBuilder 523 router for Boundary Routing via ISDN, optimized for SNA |
| Access Routing | | | | | |
| Midsize to large peer or branch offices, 1 LAN x 3 WANs and support for IP, and IPX | | SuperStack II NETBuilder 222 router for access routing | SuperStack II NETBuilder 422 router for access routing via ISDN | | |
| IP-Only Routing | | | | | |
| Midsize to large peer or branch offices, 1 LAN x 3 WANs | | SuperStack II NETBuilder 224 router for IP routing only | SuperStack II NETBuilder 424 router for IP routing only via ISDN | | |
| Full Routing | | | | | |
| Midsize to large peer or branch offices, 1 LAN x 3 WANs and full protocol support | | SuperStack II NETBuilder 227 router for full routing | SuperStack II NETBuilder 427 router for full routing via ISDN | SuperStack II NETBuilder 327 router for full routing | SuperStack II NETBuilder 527 router for full routing via ISDN |
| Midsize to large branch offices, 1 LAN x 3 WANs and X.25 gateway for telnet or VT traffic | | SuperStack II NETBuilder 228 router for X.25 connection services | | | |

Solutions for Every Remote Need

From simple 1 LAN x 1 WAN bridging to multiprotocol routing with Frame Relay, X.25, PPP, and ISDN connectivity, 3Com SuperStack II NETBuilder platforms do the job. They lower costs and simplify expansion and network changes, too.

For example, the SuperStack II NETBuilder 223, 323, 423, and 523 platforms are optimized for SNA traffic over Boundary Routing system architecture. The platforms support local termination of SNA and NetBIOS for high reliability, and they can cache SNA MAC and NetBIOS name broadcasts to reduce WAN overhead.

To simplify LAN/WAN connections, SuperStack II NETBuilder routers are part of the SuperStack II solution. With SuperStack II you can combine diverse technologies and network devices in one stacked system, strengthened with redundant power and resilience, and manage it all with Transcend management software.

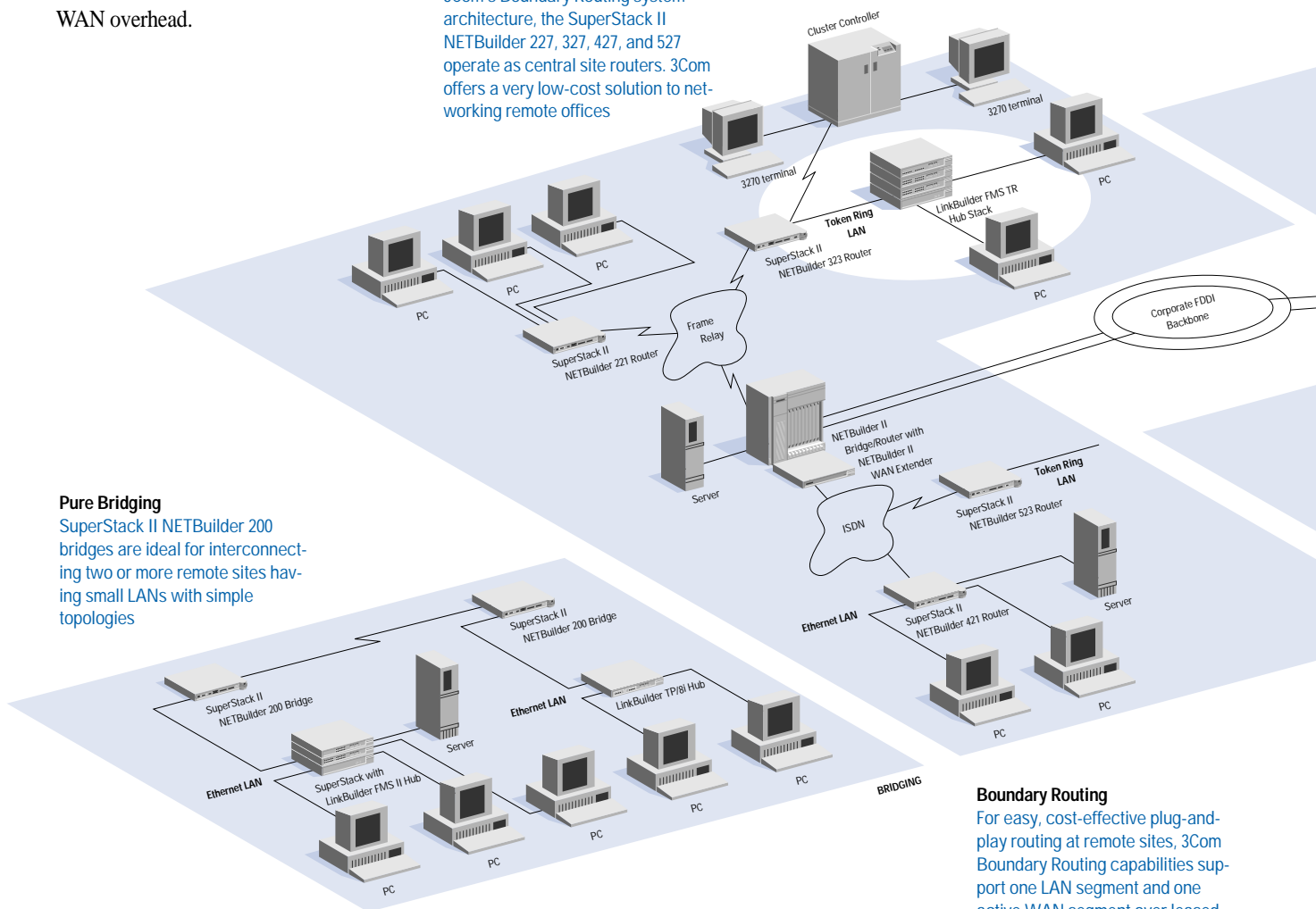
Whatever your remote office requirements, look to 3Com for the best solutions and the best value.

Frame Relay Connections

All of 3Com's SuperStack II NETBuilder platforms support Frame Relay. With Frame Relay's single-point-of-entry architecture and 3Com's Boundary Routing system architecture, the SuperStack II NETBuilder 227, 327, 427, and 527 operate as central site routers. 3Com offers a very low-cost solution to networking remote offices

SNA Boundary Routing

Available for Token Ring and Ethernet, SNA-optimized Boundary Routing automatically prioritizes SNA protocols over other protocols for predictable SNA performance



Pure Bridging

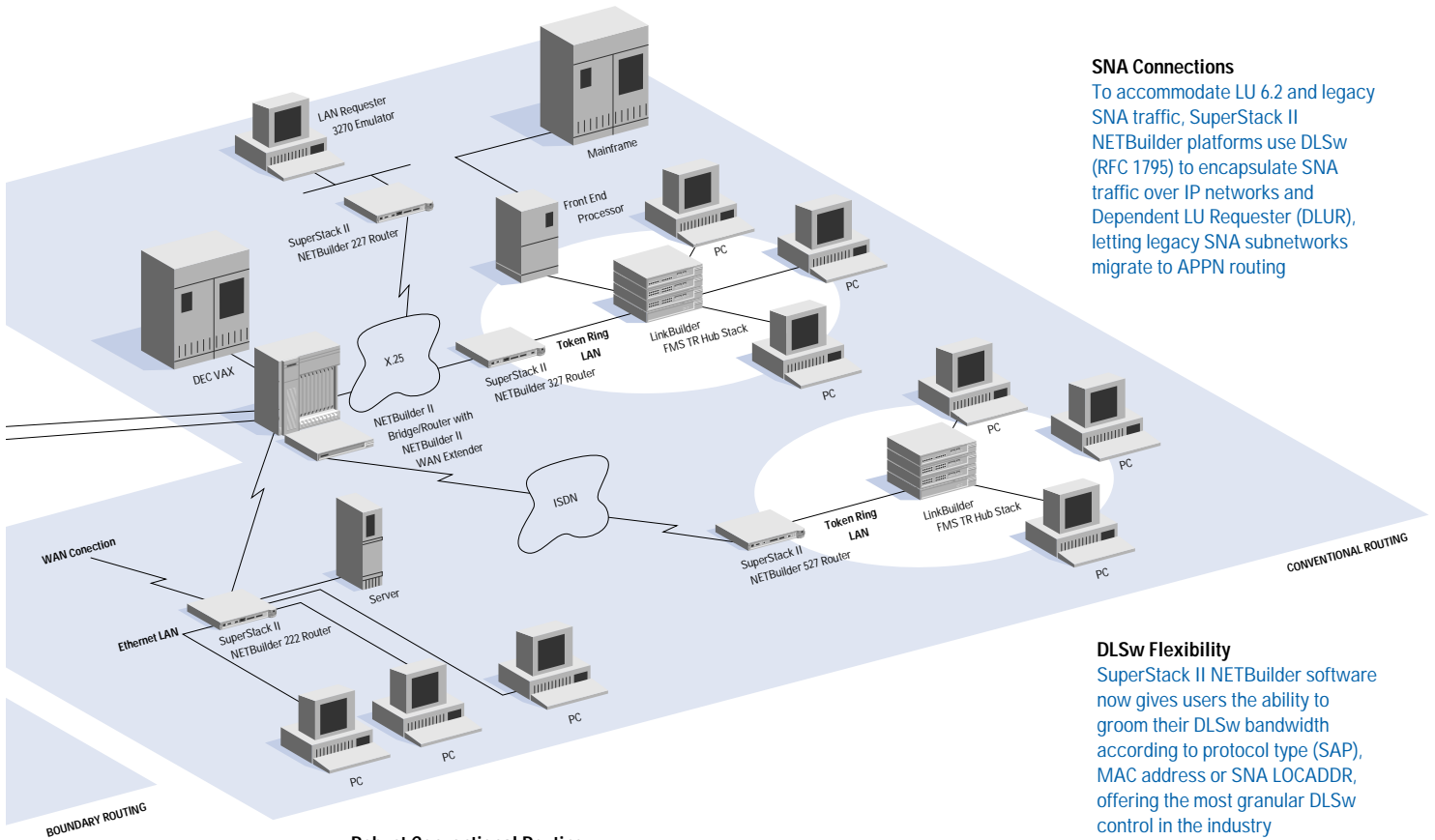
SuperStack II NETBuilder 200 bridges are ideal for interconnecting two or more remote sites having small LANs with simple topologies

Boundary Routing

For easy, cost-effective plug-and-play routing at remote sites, 3Com Boundary Routing capabilities support one LAN segment and one active WAN segment over leased lines, ISDN and Switched 56, and analog links

APPN Advances

Today's SuperStack II NETBuilder software implements APPN High Performance Routing (HPR), providing the latest IBM protocols for building APPN internetworks



Robust Conventional Routing

3Com routers provide many features for midsize to large branch offices—including SuperStack II connections that add routing to modular LAN components

SNA Connections

To accommodate LU 6.2 and legacy SNA traffic, SuperStack II NETBuilder platforms use DLSw (RFC 1795) to encapsulate SNA traffic over IP networks and Dependent LU Requester (DLUR), letting legacy SNA subnetworks migrate to APPN routing

DLSw Flexibility

SuperStack II NETBuilder software now gives users the ability to groom their DLSw bandwidth according to protocol type (SAP), MAC address or SNA LOCADDR, offering the most granular DLSw control in the industry

Platform Features

All platforms support generic SuperStack II NETBuilder software features: data com-

pression (over PPP, Frame Relay, and X.25), dial services (dial-on-demand, dial pooling, bandwidth-on demand, dial

backup, scheduled dial), data prioritization, SNMP, telnet, smart filters, and AutoStartup.

Ethernet

| SuperStack II NETBuilder | Protocol Support | WAN Protocols | Flash MBs | DRAM MBs | Dual Image Flash | LAN Ports | Active WAN Ports | Memory Upgrades | Hardware/Software Upgradeable | SuperStack II Compatible |
|--------------------------|--|--|-----------|----------|------------------|--------------|-----------------------------------|-----------------|--------------------------------------|--------------------------|
| 200 | Transparent Bridging | PPP | 2 | 2 | Standard | 1 Ethernet | 3 DTE | No | No | Yes |
| 201 | Boundary Routing | PPP, Frame Relay | 2 | 2 | Standard | 1 Ethernet | 1 DTE + backup | No | No | Yes |
| 221 | Boundary Routing | PPP, Frame Relay, X.25 | 2 | 4 | Optional | 1 Ethernet | 1 DTE + backup | Yes | Yes | Yes |
| 222 | Bridging, IP, IPX | PPP, Frame Relay, X.25, SMDS | 2 | 4 | Optional | 1 Ethernet | 3 DTE | Yes | Yes | Yes |
| 223 | SNA Boundary Routing | PPP, Frame Relay, X.25 | 4 | 8 | Optional | 1 Ethernet | 1 DTE + backup | Yes | Yes | Yes |
| 224 | IP | PPP, Frame Relay, X.25 | 2 | 4 | Optional | 1 Ethernet | 3 DTE | Yes | Yes | Yes |
| 227 | Bridging, Boundary Routing server all protocols,* LLC2 tunneling, DLSw | PPP, Frame Relay, X.25, SMDS | 4 | 8 | Optional | 1 Ethernet | 3 DTE | Yes | Yes, to SuperStack II NETBuilder 228 | Yes |
| 228 | X.25 Connection Services, for IP and OSI | X.25 | 4 | 8 | Optional | 1 Ethernet | 3 DTE | Yes | No | Yes |
| 421 | Boundary Routing | Multilink PPP, Frame Relay, X.25, ISDN | 2 | 4 | Optional | 1 Ethernet | 1 BRI | Yes | Yes | Yes |
| 422 | Bridging, IP, IPX | Multilink PPP, Frame Relay, X.25, SMDS, ISDN | 2 | 4 | Optional | 1 Ethernet | 1 BRI + 1 DTE | Yes | Yes | Yes |
| 423 | SNA Boundary Routing | Multilink PPP, Frame Relay, X.25, SMDS, ISDN | 4 | 8 | Optional | 1 Ethernet | 1 BRI + 1 DTE | Yes | Yes | Yes |
| 424 | IP | Multilink PPP, Frame Relay, X.25, SMDS, ISDN | 2 | 4 | Optional | 1 Ethernet | 3 DTE | Yes | Yes | Yes |
| 427 | Bridging, Boundary Routing server all protocols,* LLC2 tunneling, DLSw | Multilink PPP, Frame Relay, X.25, SMDS, ISDN | 4 | 8 | Optional | 1 Ethernet | 1 BRI + 1 DTE | Yes | No | Yes |
| Token Ring | | | | | | | | | | |
| 323 | SNA Boundary Routing | PPP, Frame Relay, X.25 | 4 | 8 | Optional | 1 Token Ring | 1 DTE (or DCE via cable) + backup | Yes | Yes | Yes |
| 327 | Bridging, Boundary Routing server all protocols,* LLC2 tunneling, DLSw | PPP, Frame Relay, X.25, SMDS | 4 | 8 | Optional | 1 Token Ring | 3 DTE (or DCE via cable) | Yes | No | Yes |
| 523 | SNA Boundary Routing | Multilink PPP, Frame Relay, X.25, SMDS, ISDN | 4 | 8 | Optional | 1 Token Ring | 1 BRI + 1 DTE (or DCE via cable) | Yes | Yes | Yes |
| 527 | Bridging, Boundary Routing server all protocols,* LLC2 tunneling, DLSw | Multilink PPP, Frame Relay, X.25, SMDS, ISDN | 4 | 8 | Optional | 1 Token Ring | 1 BRI 2 DTE (or DCE via cable) | Yes | No | Yes |

*Supports all LAN protocols—IP, IPX, XNS, AppleTalk, DECnet, VINES, and OSI

Specifications

SuperStack II NETBuilder Family

| | Ethernet Platforms | | | Token Ring Platforms | |
|---|--|---|---|---|--|
| | 20x Series | 22x Series | 42x Series | 32x Series | 52x Series |
| Dimensions and Weight | Length: 17.3 in/43.9 cm Width: 12.0 in/30.5 cm Height: 1.7 in/4.3 cm Weight: 10.0 lbs/4.6 kg | Length: 17.3 in/43.9 cm Width: 12.0 in/30.5 cm Height: 1.7 in/4.3 cm Weight: 10.0 lbs/4.6 kg | Length: 17.3 in/43.9 cm Width: 12.0 in/30.5 cm Height: 1.7 in/4.3 cm Weight: 10.0 lbs/4.6 kg | Length: 17.3 in/43.9 cm Width: 12.0 in/30.5 cm Height: 1.7 in/4.3 cm Weight: 10.0 lbs/4.6 kg | Length: 17.3 in/43.9 cm Width: 12.0 in/30.5 cm Height: 1.7 in/4.3 cm Weight: 10.0 lbs/4.6 kg |
| Interfaces | Ethernet: 10BASE-T, 10BASE5 (thick) WAN: V.35, RS-232, RS-449, X.21 | Ethernet: 10BASE-T, 10BASE5 (thick) WAN: V.35, RS-232, RS-449, X.21 | Ethernet: 10BASE-T, 10BASE5 (thick) ISDN: Basic Rate Interface (BRI, 2 B + D) WAN: V.35, RS-232, RS-449, X.21 | Token Ring: UTP, STP WAN: V.35 (DTE or DCE) RS-232 (DTE or DCE), universal serial connector (RS-232, V.35, RS-449, or X.21) | Token Ring: UTP, STP ISDN: Basic Rate Interface (BRI, 2 B + D) WAN: RS-232 (DTE or DCE), universal serial connector (RS-232, V.35, RS-449, or X.21) |
| Line Speeds | Ethernet: 10 Mbps WAN: 1.2 Kbps to 1.544 Mbps | Ethernet: 10 Mbps WAN: 1.2 Kbps to 1.544 Mbps | Ethernet: 10 Mbps ISDN: 64 Kbps per B WAN: 1.2 Kbps to 1.544 Mbps | Token Ring: 4 /16 Mbps WAN: 1.2 Kbps to 1.544 Mbps | Token Ring: 4 /16 Mbps ISDN: 64 Kbps per B, 16 Kbps per D WAN: 1.2 Kbps to 1.544 Mbps |
| Performance | WAN forwarding: 2,700 64-byte PPS (T1/E1) Filtering: 10,000 PPS | WAN forwarding: 2,700 64-byte PPS (T1/E1) Filtering: 10,000 PPS | WAN forwarding: 2,700 64-byte PPS (T1/E1) Filtering: 10,000 PPS | WAN forwarding: 3,000 64-byte PPS (T1/E1) | WAN forwarding: 3,000 64 byte PPS (T1/E1) |
| Mean Time Between Failures | 107,000 hours (Bellcore) | | | | |
| Power Requirements | United States: 90 to 132 VAC, 47 to 63 hz, 1.0A International: 180 to 264 VAC, 47 to 63 hz, 0.5A Power consumption: 40W AC; RPS 25W | | | | |
| Environmental Ranges | Operating: 41° to 104° F (5° to 40° C) Nonoperating: -42° to 167° F (-40° to 75° C) diskless | | | | |
| Thermal Ratings | 137.2 maximum BTU per hour | | | | |
| Agency Approvals: Product Safety | Canada: CSA certified ref: CSA-22.2 No. 950 Europe: TUV licensed, ref: EN 60950, 2nd ed. USA: UL listed, ref: UL 1950 | | | | |
| Agency Approvals: Emissions | Canada: 3Com Declaration, ref: IECS-003, Class A European Union: 3Com Declaration, ref: EN 55022, Class B Japan: VCCI Grant of Approval, ref: VCCI, Class 1 ITE USA: 3Com verified, ref: FCC Part 15, Class A | | | | |
| Agency Approvals: Immunity | European Union: 3Com Declaration, ref: EN 50082-1 | | | | |
| Agency Approvals: Telecommunications | Europe Union: Type Approved, ref: NET1, NET2, I-CTR2. CE marked under Telecom directive (91/263/EEC) | Europe Union: Type Approved, ref: NET1, NET2, I-CTR2. CE marked under Telecom directive (91/263/EEC) | Canada: Certified, ref: CS-03 European Union: Type Approved, ref: NET1, NET2, I-CTR2. CE marked under Telecom directive (91/263/EEC) France: DGPT Approved, VN3 + P.T.S. for Numeris and Euro-Numeris Connection Japan: JATE Approved, ref: Technical Requirements Compliance Approval | Europe Union: Type Approved, ref: NET1, NET2, I-CTR2. CE marked under Telecom directive (91/263/EEC) | Canada: Certified, ref: CS-03 European Union: Type Approved, ref: NET1, NET2, I-CTR2. CE marked under Telecom directive (91/263/EEC) France: DGPT Approved, VN3 + P.T.S. for Numeris and Euro Numeris Connection |
| ISDN Type Approvals | Australia: Pending Canada: 22996310A European Union: HDTP/KR/167/251282 France: 94349B Hong Kong: granted 08/29/95 Japan: T94-5183-0 Malaysia: DAAA/02B/0995/S New Zealand: PTC231/95/021 Singapore: ISDN1-ISTA-AD-0858-95 Switzerland: BAKOM 95.0059.I.N | | | Australia: Pending Canada: 22996310A European Union: TRQ/96022720/AA/00 France: 96155B Japan: Pending Switzerland: Pending | |
| Warranty | 1 year | | | | |



Specifications *(continued)*

SuperStack II NETBuilder Family

3Com Corporation
 P.O. Box 58145
 5400 Bayfront Plaza
 Santa Clara, CA 95052-8145
 Phone: 800-NET-3Com
 or 408-764-5000
 Fax: 408-764-5001
 World Wide Web:
<http://www.3com.com>

3Com ANZA
 ANZA East: 61 2 9937 5000
 ANZA West: 61 3 9653 9515

3Com Asia Limited
 Beijing, China: 86 10 8492 568
 Shanghai, China: 86 21 6374 0220
 Ext. 6115
 Hong Kong: 852 2501 1111
 Indonesia: 62 21 523 9181
 Korea: 82 2 319 4711
 Malaysia: 60 3 732 7910
 Singapore: 65 538 9368
 Taiwan: 886 2 377 5850
 Thailand: 662 231 8151

3Com Benelux B.V.
 Belgium: 32 2 716 4880
 Netherlands: 31 30 6029700

3Com Canada
 Calgary: 403 265 3266
 Montreal: 514 874 8008
 Toronto: 416 498 3266
 Vancouver: 604 434 3266

3Com European HQ
 44 1628 897000

3Com France
 33 1 69 86 68 00

3Com GmbH
 Czech and Slovak Republics:
 42 2 21845 800
 Berlin, Germany: 49 30 3498790
 Munich, Germany: 49 89 627320
 Poland: 48 22 6451351
 Switzerland: 41 31 9984555

3Com Ireland
 353 1 820 7077

3Com Japan
 81 3 3345 7251

3Com Latin America
 U.S. Headquarters: 408-764-6075
 Argentina: 54 1 815 7164
 Brazil: 55 11 546 0869
 Chile: 56 2 633 9242
 Mexico: 52 5 520 7841

3Com Northern Latin America
 Miami, Florida: 305-261-3266
 Colombia: 57 1 618 4584
 Peru: 51 1 449 2611
 Venezuela: 58 2 261 0710

3Com Mediterraneo
 Milan, Italy: 39 2 253011
 Rome, Italy: 39 6 5917756
 Spain: 34 1 3831700

3Com Middle East
 971 4 349049

3Com Nordic AB
 Denmark: 45 39 27 85 00
 Finland: 358 0 435 420 67
 Norway: 47 22 18 40 03
 Sweden: 41 31 996 14

3Com South Africa
 27 11 807 4397

3Com UK Ltd.
 Edinburgh: 44 1312 208228
 Manchester: 44 1618 737717
 Marlow: 44 1628 897000

Ordering Information*

SuperStack II NETBuilder Platforms

All platforms ship with software and documentation included

SuperStack II NETBuilder 200
 bridge (Ethernet) 3C8200C

SuperStack II NETBuilder 201
 router (Ethernet, for Boundary
 routing) 3C8201C

SuperStack II NETBuilder 221
 router (Ethernet, for Boundary
 Routing) 3C8221C

SuperStack II NETBuilder 222
 router (Ethernet, for access routing)
 3C8222C

SuperStack II NETBuilder 223
 router (Ethernet, for SNA
 Boundary Routing) 3C8223C

SuperStack II NETBuilder 224
 router (Ethernet, for IP Routing)
 3C8224C

SuperStack II NETBuilder
 227 router (Ethernet, for full
 routing) 3C8227C

SuperStack II NETBuilder
 228 router (Ethernet, for X.25
 connection service) 3C8228AC

SuperStack II NETBuilder
 323 router (Token Ring, for SNA
 Boundary Routing) 3C8323C

SuperStack II NETBuilder 327
 router (Token Ring, for full routing)
 3C8327C

SuperStack II NETBuilder 421
 router (Ethernet with ISDN,
 for Boundary Routing) 3C8421C

SuperStack II NETBuilder 422
 router (Ethernet with ISDN,
 for access routing) 3C8422C

SuperStack II NETBuilder 423
 router (Ethernet with ISDN,
 for Boundary Routing) 3C8423C

SuperStack II NETBuilder 424
 router (Ethernet with ISDN,
 for IP routing) 3C8424C

SuperStack II NETBuilder 427
 router (Ethernet with ISDN,
 for full routing) 3C8427C

SuperStack II NETBuilder 523
 router (Token Ring with ISDN,
 for SNA Boundary Routing)
 3C8523C

SuperStack II NETBuilder 527
 router (Token Ring with ISDN,
 for full routing) 3C8527C

Management Software

Transcend® Enterprise Manager
 Version 4.1 for Windows
 3C15010D

Transcend Enterprise Manager
 Version 4.0 for UNIX 3C27850D

*For international units, please add the appropriate code to the product: -AA for Asian/Australian power cord; -ME for Mid-European power cord; or -UK for U.K. power cord.

To learn more about 3Com products, visit our World Wide Web site at <http://www.3com.com>.

© 3Com Corporation 1996. All rights reserved. 3Com is a publicly owned corporation (NASDAQ:COMS). 3Com, AccessBuilder, Boundary Routing, NETBuilder, NETBuilder II, and Transcend are registered trademarks and SuperStack is a trademark of 3Com Corporation. Unless otherwise indicated, 3Com registered trademarks are registered in the United States and may or may not be registered in other countries. Boundary Routing is also a registered trademark of 3Com Corporation in Austria, Benelux, Denmark, France, Germany, Norway, Spain, Sweden, Switzerland, and the United Kingdom. NETBuilder is also a registered trademark of 3Com Corporation in Australia, Canada, France, Germany, Sweden, and the United Kingdom. SuperStack is also a registered trademark of 3Com Corporation in Colombia, Denmark, France, and Mexico. Transcend is also a registered trademark of 3Com Corporation in Benelux, Denmark, Finland, France, Germany, Korea, Norway, Saudi Arabia, Slovak Republic, and Sweden. AppleTalk is a registered trademark of Apple Computer, Inc. Banyan and VINES are registered trademarks of Banyan Systems, Inc. DECnet is a registered trademark of Digital Equipment Corporation. NetWare is a registered trademark of Novell, Inc. UNIX is a registered trademark of UNIX System Laboratories, Inc. XNS is a trademark of Xerox Corporation. Other brand and product names may be trademarks or registered trademarks of their respective owners. All specifications are subject to change without notice.